

Part No. 210274-G
December 2005

4655 Great America Parkway
Santa Clara, CA 95054

Installing Enterprise Switch Manager



NORTEL

Copyright © 2005 Nortel Networks. All rights reserved.

The information in this document is subject to change without notice. The statements, configurations, technical data, and recommendations in this document are believed to be accurate and reliable, but are presented without express or implied warranty. Users must take full responsibility for their applications of any products specified in this document. The information in this document is proprietary to Nortel Networks.

The software described in this document is furnished under a license agreement and may be used only in accordance with the terms of that license. The software license agreement is included in this document.

Trademarks

*Nortel, Nortel Networks, the Nortel logo, and the Globemark are trademarks of Nortel Networks.

Adobe and Adobe Reader are trademarks of Adobe Systems Incorporated.

Microsoft, Windows, and Windows NT are trademarks of Microsoft Corporation.

The asterisk after a name denotes a trademarked item.

Restricted rights legend

Use, duplication, or disclosure by the United States Government is subject to restrictions as set forth in subparagraph (c)(1)(ii) of the Rights in Technical Data and Computer Software clause at DFARS 252.227-7013.

Notwithstanding any other license agreement that may pertain to, or accompany the delivery of, this computer software, the rights of the United States Government regarding its use, reproduction, and disclosure are as set forth in the Commercial Computer Software-Restricted Rights clause at FAR 52.227-19.

Statement of conditions

In the interest of improving internal design, operational function, and/or reliability, Nortel Networks reserves the right to make changes to the products described in this document without notice.

Nortel Networks does not assume any liability that may occur due to the use or application of the product(s) or circuit layout(s) described herein.

Portions of the code in this software product may be Copyright © 1988, Regents of the University of California. All rights reserved. Redistribution and use in source and binary forms of such portions are permitted, provided that the above copyright notice and this paragraph are duplicated in all such forms and that any documentation, advertising materials, and other materials related to such distribution and use acknowledge that such portions of the software were developed by the University of California, Berkeley. The name of the University may not be used to endorse or promote products derived from such portions of the software without specific prior written permission.

SUCH PORTIONS OF THE SOFTWARE ARE PROVIDED “AS IS” AND WITHOUT ANY EXPRESS OR IMPLIED WARRANTIES, INCLUDING, WITHOUT LIMITATION, THE IMPLIED WARRANTIES OF MERCHANTABILITY AND FITNESS FOR A PARTICULAR PURPOSE.

In addition, the program and information contained herein are licensed only pursuant to a license agreement that contains restrictions on use and disclosure (that may incorporate by reference certain limitations and notices imposed by third parties).

Nortel Networks software license agreement

This Software License Agreement (“License Agreement”) is between you, the end-user (“Customer”) and Nortel Networks Corporation and its subsidiaries and affiliates (“Nortel Networks”). PLEASE READ THE FOLLOWING

CAREFULLY. YOU MUST ACCEPT THESE LICENSE TERMS IN ORDER TO DOWNLOAD AND/OR USE THE SOFTWARE. USE OF THE SOFTWARE CONSTITUTES YOUR ACCEPTANCE OF THIS LICENSE AGREEMENT. If you do not accept these terms and conditions, return the Software, unused and in the original shipping container, within 30 days of purchase to obtain a credit for the full purchase price.

“Software” is owned or licensed by Nortel Networks, its parent or one of its subsidiaries or affiliates, and is copyrighted and licensed, not sold. Software consists of machine-readable instructions, its components, data, audio-visual content (such as images, text, recordings or pictures) and related licensed materials including all whole or partial copies. Nortel Networks grants you a license to use the Software only in the country where you acquired the Software. You obtain no rights other than those granted to you under this License Agreement. You are responsible for the selection of the Software and for the installation of, use of, and results obtained from the Software.

1. Licensed Use of Software. Nortel Networks grants Customer a nonexclusive license to use a copy of the Software on only one machine at any one time or to the extent of the activation or authorized usage level, whichever is applicable. To the extent Software is furnished for use with designated hardware or Customer furnished equipment (“CFE”), Customer is granted a nonexclusive license to use Software only on such hardware or CFE, as applicable. Software contains trade secrets and Customer agrees to treat Software as confidential information using the same care and discretion Customer uses with its own similar information that it does not wish to disclose, publish or disseminate. Customer will ensure that anyone who uses the Software does so only in compliance with the terms of this Agreement. Customer shall not a) use, copy, modify, transfer or distribute the Software except as expressly authorized; b) reverse assemble, reverse compile, reverse engineer or otherwise translate the Software; c) create derivative works or modifications unless expressly authorized; or d) sublicense, rent or lease the Software. Licensors of intellectual property to Nortel Networks are beneficiaries of this provision. Upon termination or breach of the license by Customer or in the event designated hardware or CFE is no longer in use, Customer will promptly return the Software to Nortel Networks or certify its destruction. Nortel Networks may audit by remote polling or other reasonable means to determine Customer’s Software activation or usage levels. If suppliers of third party software included in Software require Nortel Networks to include additional or different terms, Customer agrees to abide by such terms provided by Nortel Networks with respect to such third party software.

2. Warranty. Except as may be otherwise expressly agreed to in writing between Nortel Networks and Customer, Software is provided “AS IS” without any warranties (conditions) of any kind. NORTEL NETWORKS DISCLAIMS ALL WARRANTIES (CONDITIONS) FOR THE SOFTWARE, EITHER EXPRESS OR IMPLIED, INCLUDING, BUT NOT LIMITED TO THE IMPLIED WARRANTIES OF MERCHANTABILITY AND FITNESS FOR A PARTICULAR PURPOSE AND ANY WARRANTY OF NON-INFRINGEMENT. Nortel Networks is not obligated to provide support of any kind for the Software. Some jurisdictions do not allow exclusion of implied warranties, and, in such event, the above exclusions may not apply.

3. Limitation of Remedies. IN NO EVENT SHALL NORTEL NETWORKS OR ITS AGENTS OR SUPPLIERS BE LIABLE FOR ANY OF THE FOLLOWING: a) DAMAGES BASED ON ANY THIRD PARTY CLAIM; b) LOSS OF, OR DAMAGE TO, CUSTOMER’S RECORDS, FILES OR DATA; OR c) DIRECT, INDIRECT, SPECIAL, INCIDENTAL, PUNITIVE, OR CONSEQUENTIAL DAMAGES (INCLUDING LOST PROFITS OR SAVINGS), WHETHER IN CONTRACT, TORT OR OTHERWISE (INCLUDING NEGLIGENCE) ARISING OUT OF YOUR USE OF THE SOFTWARE, EVEN IF NORTEL NETWORKS, ITS AGENTS OR SUPPLIERS HAVE BEEN ADVISED OF THEIR POSSIBILITY. The foregoing limitations of remedies also apply to any developer and/or supplier of the Software. Such developer and/or supplier is an intended beneficiary of this Section. Some jurisdictions do not allow these limitations or exclusions and, in such event, they may not apply.

4. General

- a. If Customer is the United States Government, the following paragraph shall apply: All Nortel Networks Software available under this License Agreement is commercial computer software and commercial computer software documentation and, in the event Software is licensed for or on behalf of the United States Government, the respective rights to the software and software documentation are governed by Nortel Networks standard commercial license in accordance with U.S. Federal Regulations at 48 C.F.R. Sections 12.212 (for non-DoD entities) and 48 C.F.R. 227.7202 (for DoD entities).

- b. Customer may terminate the license at any time. Nortel Networks may terminate the license if Customer fails to comply with the terms and conditions of this license. In either event, upon termination, Customer must either return the Software to Nortel Networks or certify its destruction.
- c. Customer is responsible for payment of any taxes, including personal property taxes, resulting from Customer's use of the Software. Customer agrees to comply with all applicable laws including all applicable export and import laws and regulations.
- d. Neither party may bring an action, regardless of form, more than two years after the cause of the action arose.
- e. The terms and conditions of this License Agreement form the complete and exclusive agreement between Customer and Nortel Networks.
- f. This License Agreement is governed by the laws of the country in which Customer acquires the Software. If the Software is acquired in the United States, then this License Agreement is governed by the laws of the state of New York.

Contents

About this guide	7
Supported devices	7
Operating Systems	8
What is included on the CD	8
Before you begin	9
Installing ESM in a Windows environment	10
Installing ESM on Windows from the CD	10
Installing ESM on Windows from the web	10
Executing the ESM installation software on Windows	11
Installing ESM in a Solaris 2.7, 2.8, or 2.9 environment	19
Installing ESM on Solaris from the CD	19
Installing ESM on Solaris from the web	20
Executing the ESM installation software on Solaris	21
Installing ESM in a Linux environment	29
Installing ESM on Linux from the CD	29
Installing ESM on Linux from the web	30
Executing the ESM installation software on Linux	31
Launching Enterprise Switch Manager	39
Launching Device Manager	39
Launching Scheduler Server from the command line	40
Removing ESM in Windows	40
Removing ESM in Solaris or Linux environments	41

About this guide

This guide describes the procedure to install Enterprise Switch Manager on a PC or a Sun* workstation running Solaris* 2.7, 2.8, or 2.9, or SunOS* 5.7, 5.8, or 5.9, or Linux-Kernel version 2.2 and above.

This installation guide contains the following sections:

Section	Page
Supported devices	7
Operating Systems	8
What is included on the CD	8
Before you begin	9
Installing ESM in a Windows environment	10
Installing ESM in a Solaris 2.7, 2.8, or 2.9 environment	19
Installing ESM in a Linux environment	29
Launching Enterprise Switch Manager	39
Launching Device Manager	39
Launching Scheduler Server from the command line	40
Removing ESM in Windows	40
Removing ESM in Solaris or Linux environments	41

Supported devices

Refer to the *Release Notes for Enterprise Switch Manager (209960)* for the latest list of devices supported by each version of ESM software.

Operating Systems

Table 1 lists the operating systems supported by the Enterprise Switch Manager.

Table 1 Supported operating systems

Operating System	Version
Microsoft Windows*	95, 98, NT, 2000 (Professional), XP, and 2003
Unix—Solaris/SunOS	2.7, 2.8, and 2.9/5.7, 5.8, and 5.9
Linux	Kernel version 2.2 and above



Note: This release of ESM bundles the Java Runtime Environment (JRE). Operating system patches are required for installing the JRE for some Solaris/SunOS releases.

What is included on the CD

Your *Enterprise Switch Manager Software* CD contains Enterprise Switch Manager Software for Windows, Solaris, and Linux.

Java Device Manager (JDM) is installed as part of the Enterprise Switch Manager installation. After installation, Device Manager can be upgraded independently of Enterprise Switch Manager.

Before you begin

Before you install Enterprise Switch Manager, make sure the following requirements are met:

- If you are installing Enterprise Switch Manager on a Sun workstation, you must have system administration and super user (root) access permissions.
- If you are installing Enterprise Switch Manager on a Sun workstation, your system must be up-to-date with the required patches to run the JRE required by Enterprise Switch Manager Software.
- If a previous version of Enterprise Switch Manager is running on your system, either uninstall your previous version of the Enterprise Switch Manager software, or install the new software to a different directory. (You can have multiple versions of Enterprise Switch Manager stored on your PC or UNIX machine, provided that each version is stored in a separate directory).
- Your system must meet the RAM and storage requirements listed in [Table 2](#) for Enterprise Switch Manager and Device Manager.

Table 2 Minimum RAM and storage requirements

Platform	Requirements
Windows	128 megabytes (MB) of RAM
	300 MB of disk space
Solaris	128 MB of RAM
	300 MB of disk space
Linux	128 MB of RAM
	300 MB of disk space

In a Solaris environment, you may also need to install system patches.



Note: To ensure proper operation, any Solaris/SunOS patches, if required, must be installed prior to installing Enterprise Switch Manager.

Installing ESM in a Windows environment

This section includes information on the following topics:

- [“Installing ESM on Windows from the CD”](#)
- [“Installing ESM on Windows from the web”](#)
- [“Executing the ESM installation software on Windows”](#)

Installing ESM on Windows from the CD

To access the ESM software from the installation CD:

- 1 Close all programs.
- 2 Insert the *Enterprise Switch Manager Software* CD into your CD-ROM drive.
- 3 From the Windows Start menu, choose **Start > Run**.
The **Run** dialog box opens.
- 4 Use **Browse** to navigate to the drive where the CD-ROM is located.
- 5 On the CD-ROM drive, locate the **\ESM_SW\ESM-Windows** subdirectory.
- 6 Double-click the **esm_<xxx>.exe** file.



Note: In the file name, <xxx> represents the current version of the ESM software.

To continue, see [“Executing the ESM installation software on Windows”](#) on page 11.

Installing ESM on Windows from the web

To obtain the ESM software from the Nortel web site:

- 1 Go to the following URL:
<http://www.nortel.com/support>
- 2 Select the software support page for ESM.
The software page opens.

- 3 Download the ESM software for Windows to a desired directory on your system. The software is a self-extracting .exe file.
- 4 Once the file transfer is complete, close all programs.
- 5 Navigate to the directory on your system where you downloaded the ESM Software.
- 6 Double-click the `esm_<xxx>.exe` file.



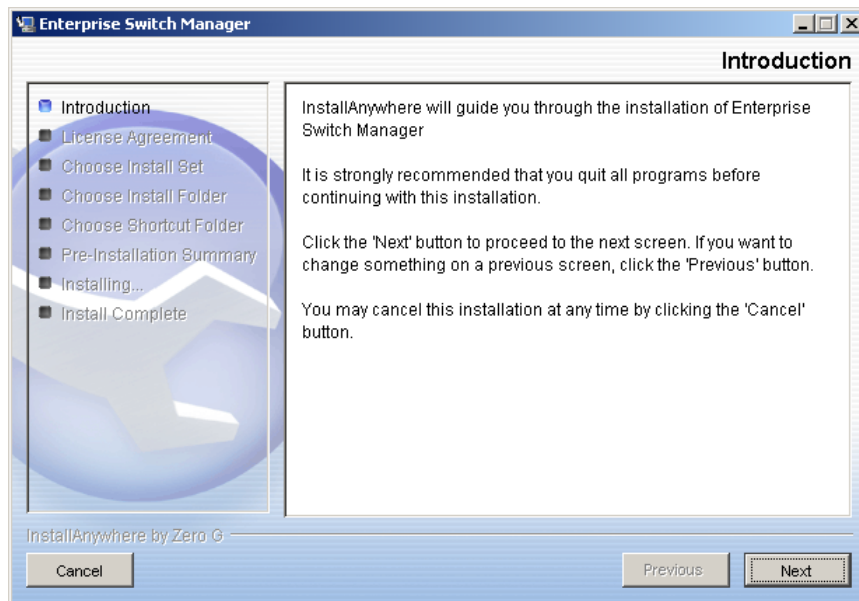
Note: In the file name, <xxx> represents the current version of the ESM software.

To continue, see [“Executing the ESM installation software on Windows”](#).

Executing the ESM installation software on Windows

When you double-click the `esm_<xxx>.exe` file, an install screen opens, followed by a Nortel dialog box. When the InstallAnywhere **Introduction** dialog box opens ([Figure 1](#)), you are ready to install ESM.

Figure 1 InstallAnywhere Introduction dialog box



- 1 Click **Next** to continue the installation process.
The **License Agreement** dialog box opens (Figure 2).

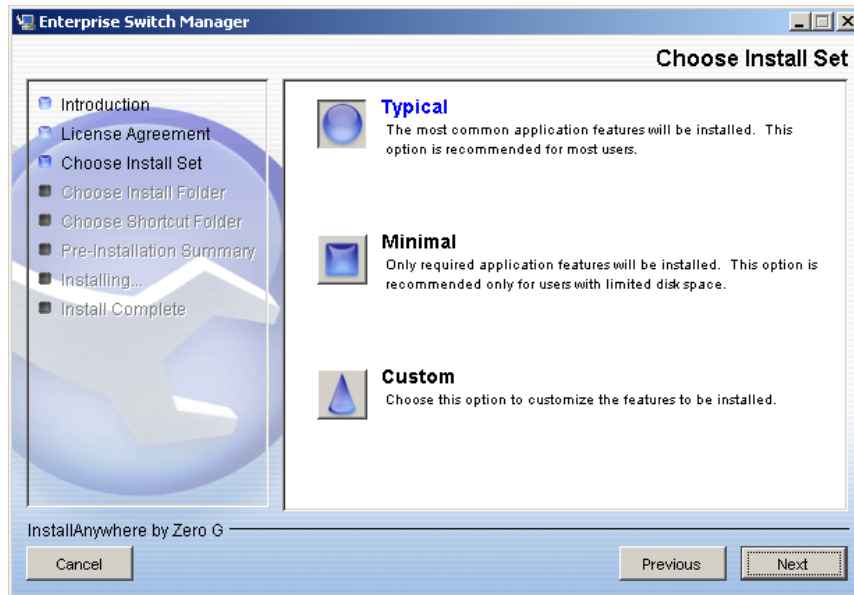
Figure 2 License Agreement dialog box



- 2 Read the terms of the license agreement carefully.
- 3 Click **I accept the terms of the license agreement** as shown in Figure 2.
- 4 Click **Next**.

The **Choose Install Set** dialog box opens (Figure 3).

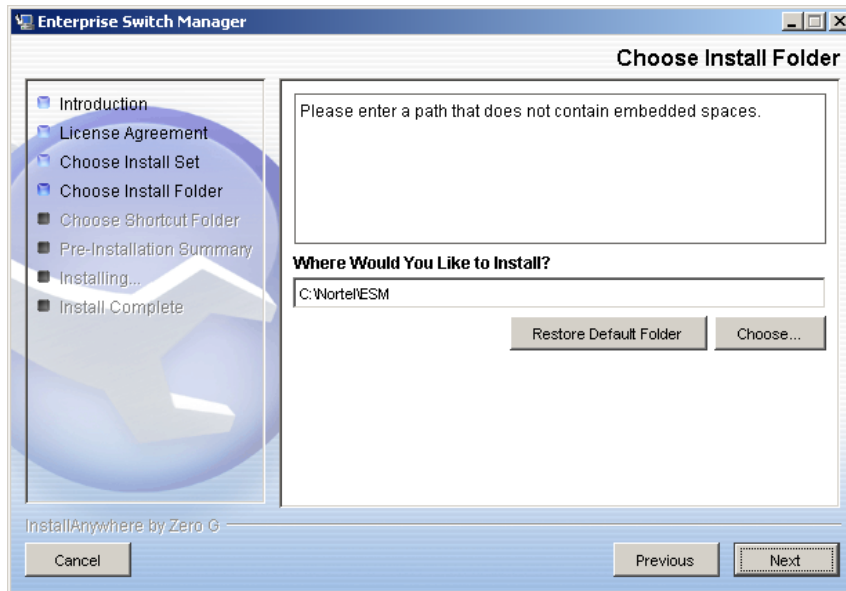
Figure 3 Choose Install Set dialog box



- 5 Do one of the following:
 - Select **Typical** installation to install the common set features.
 - Select **Minimal** installation to select the features to install (recommended for those with limited disk space).
 - Select **Custom** installation to customize the features prior to installation.
- 6 Click **Next**.

The **Choose Install Folder** dialog box opens (Figure 4).

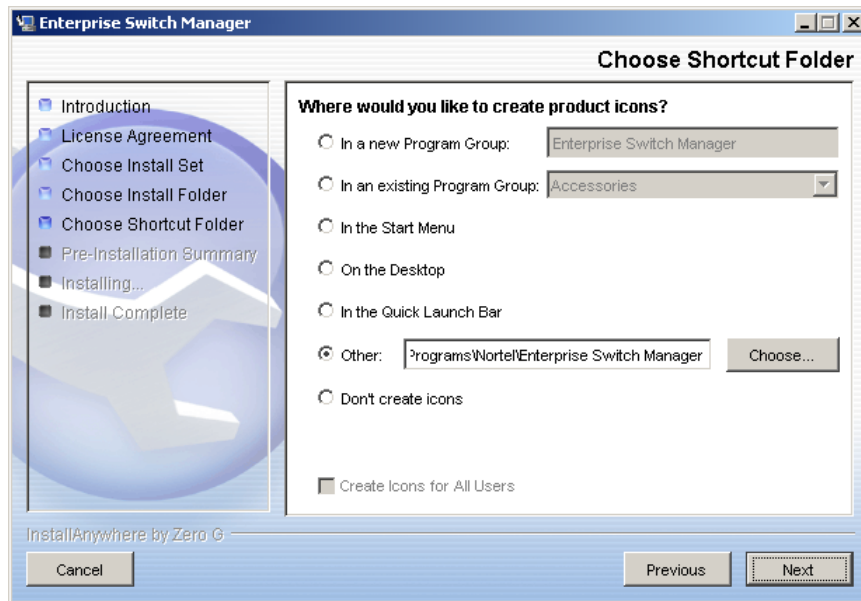
Figure 4 Choose Install Folder dialog box



- 7** Select **Restore Default Folder** or click **Choose** to select the storage path.
You cannot have spaces in the path name.
- 8** Click **Next**.

The **Choose Shortcut Folder** dialog box opens (Figure 5).

Figure 5 Choose Shortcut Folder dialog box

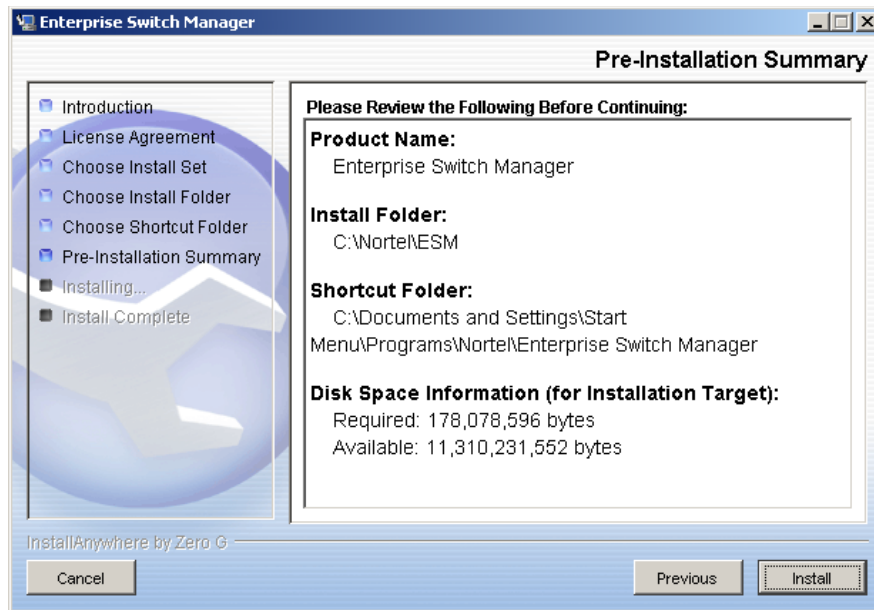


9 Select your shortcut path(s).

10 Click **Next**.

The **Pre-Installation Summary** dialog box opens (Figure 6).

Figure 6 Pre-installation Summary dialog box

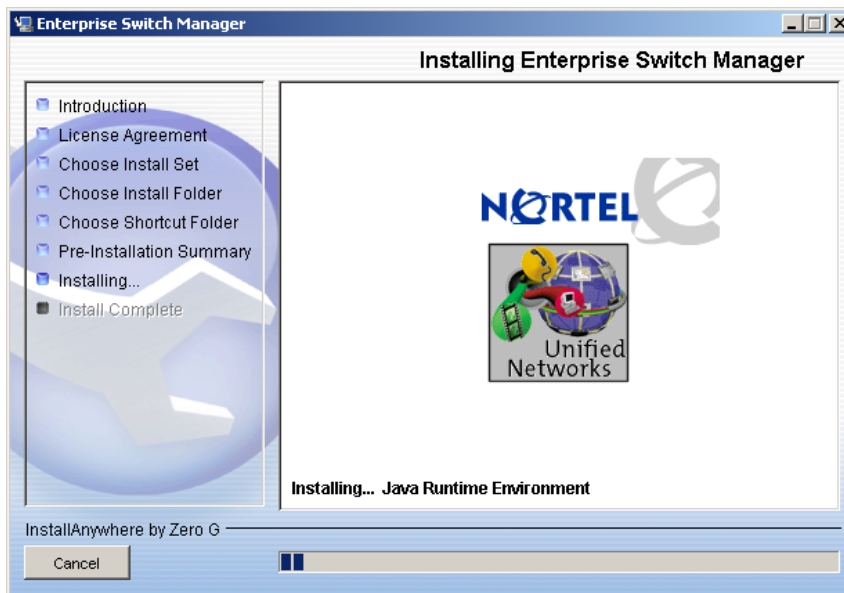


11 Verify the folder, shortcut(s), and disk space required to install the software. Use the **Previous** button to return to the appropriate dialog box to make changes.

12 Click **Install**.

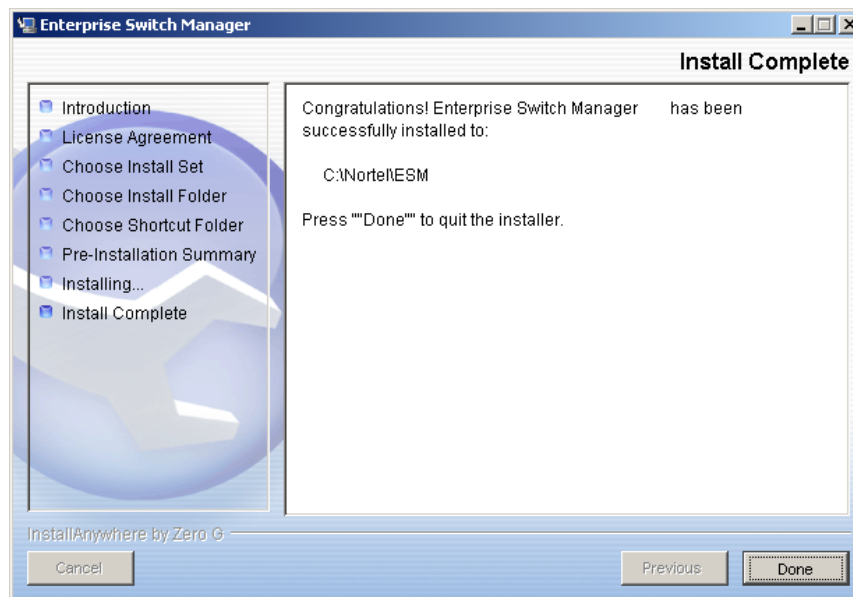
The installation process begins (Figure 7).

Figure 7 Installing Enterprise Switch Manager dialog box



When the installation is complete, the **Install Complete** dialog box opens (Figure 8).

Figure 8 Install Complete dialog box



13 Click **Done**.

For more information on using Enterprise Switch Manager, refer to *Using Enterprise Switch Manager* (208963).

Installing ESM in a Solaris 2.7, 2.8, or 2.9 environment



Note: To ensure proper operation, any Solaris/SunOS patches, if required, must be installed prior to installing Enterprise Switch Manager.

To run Enterprise Switch Manager on a Sun workstation, the workstation must be running Solaris 2.7, 2.8, or 2.9 or SunOS 5.7, 5.8, or 5.9, and the appropriate operating system patches for the version of Solaris/SunOS on your workstation must be installed. If your system has an older version of Solaris/SunOS, you must upgrade the system to at least the 2.7/5.7 level before you install this software.



Note: Because Solaris is a multi-user system, Nortel recommends that you install ESM as a super-user (root). Super user is required to install the RMIRegistry server and the ESM Scheduler server.

This section includes information on the following topics:

- [“Installing ESM on Solaris from the CD”](#)
- [“Installing ESM on Solaris from the web” on page 20](#)
- [“Executing the ESM installation software on Solaris” on page 21](#)

Installing ESM on Solaris from the CD

The following instructions assume that you have mounted the CD-ROM drive onto the /cdrom directory. For instructions on mounting the CD-ROM drive, refer to your system’s operating system user guide.

To install the ESM software in a Solaris environment from the CD:

- 1 Close all programs.
- 2 Insert the *Enterprise Switch Manager Software* CD into your CD-ROM drive.
- 1 Copy the install program file **esm_<xxxx>_solaris.sh** from the **/ESM_SW/ESM-Unix** subdirectory to a preferred location on your workstation.

- 2 Run the install program by entering:

```
esm_<xxxx>_solaris.sh
```

To continue, see “Executing the ESM installation software on Solaris” on page 21.

Installing ESM on Solaris from the web

To install the ESM software to a Solaris environment from the web:

- 1 Go to the following URL:

<http://www.nortel.com/support>

- 2 Select the software support page for ESM.

The software page opens.

- 3 Download the ESM software for Solaris to a desired directory on your system. The software is a self-extracting .sh file.

- 4 Once the file transfer is complete, close all programs.

- 5 Navigate to the directory on your system where you loaded the ESM software.

- 6 Make the installation file executable by entering:

```
chmod a+x esm_<xxxx>_solaris.sh
```

- 7 Run the install program by entering:

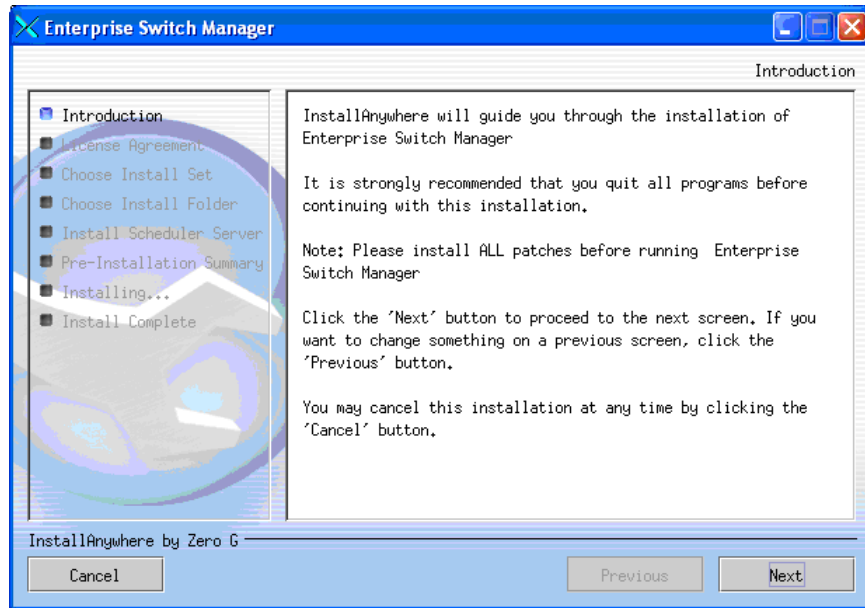
```
esm_<xxxx>_solaris.sh
```

To continue, see “Executing the ESM installation software on Solaris” on page 21.

Executing the ESM installation software on Solaris

When you run the `esm_<xxxx>_solaris.sh` program file, an install screen opens, followed by a Nortel dialog box. When the InstallAnywhere **Introduction** dialog box opens (Figure 9), you are ready to begin the ESM installation.

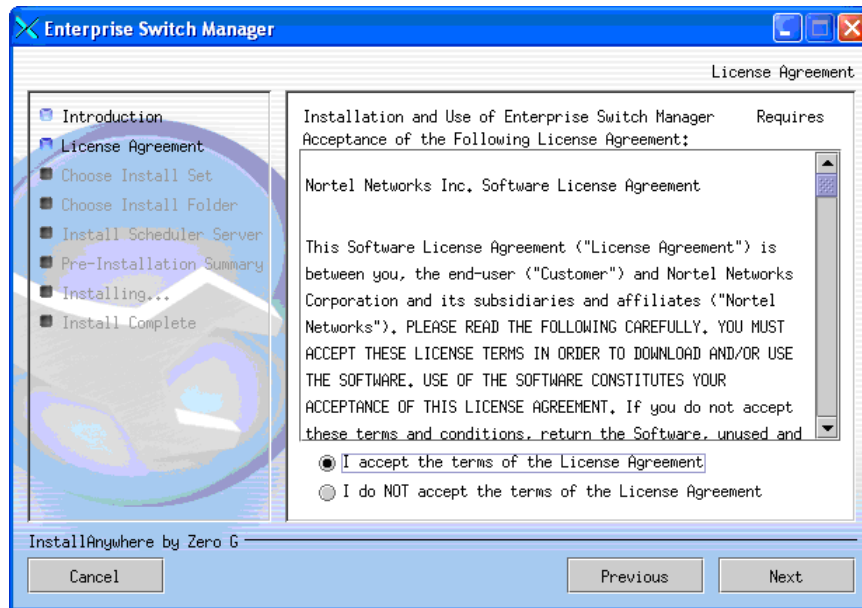
Figure 9 InstallAnywhere Introduction dialog box



- 1 Click **Next** to continue the installation process.

The **License Agreement** dialog box opens (Figure 10).

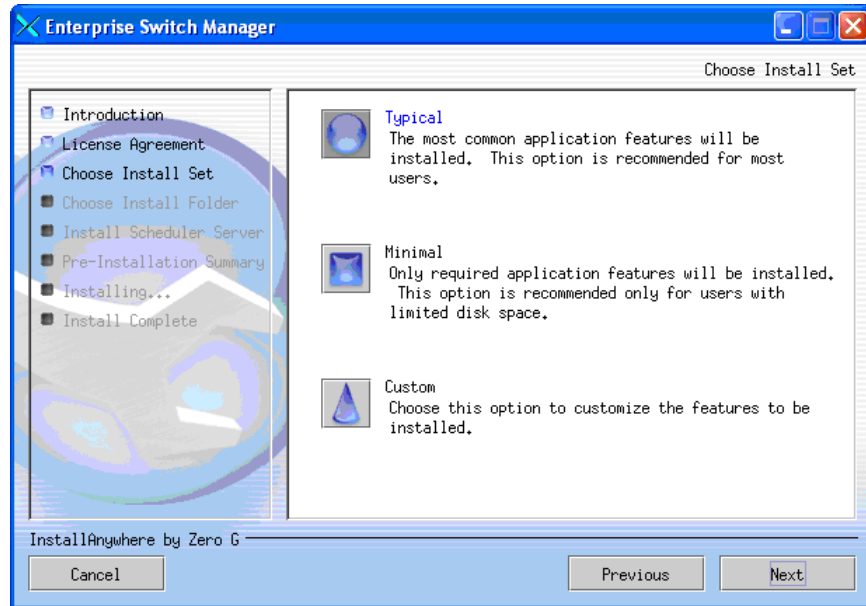
Figure 10 License Agreement dialog box



- 2 Read the terms of the license agreement carefully.
- 3 Click **I accept the terms of the license agreement** as shown in Figure 10.
- 4 Click **Next**.

The **Choose Install Set** dialog box opens (Figure 11).

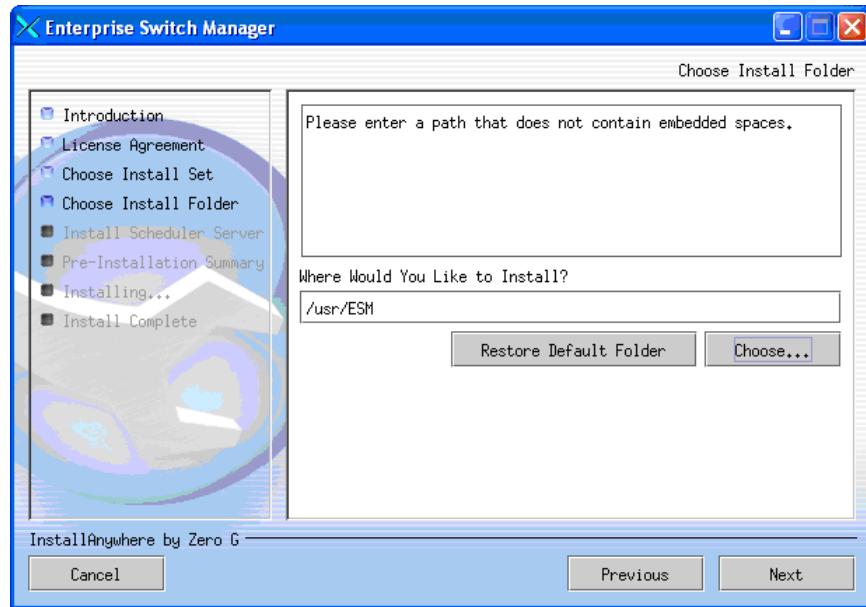
Figure 11 Choose Install Set dialog box



- 5 Do *one* of the following:
 - Select **Typical** installation to install the common set features.
 - Select **Minimal** installation to select features to install (recommended for those with limited disk space).
 - Select **Custom** installation to customize the features prior to installation.
- 6 Click **Next**.

The **Choose Install Folder** dialog box opens (Figure 12).

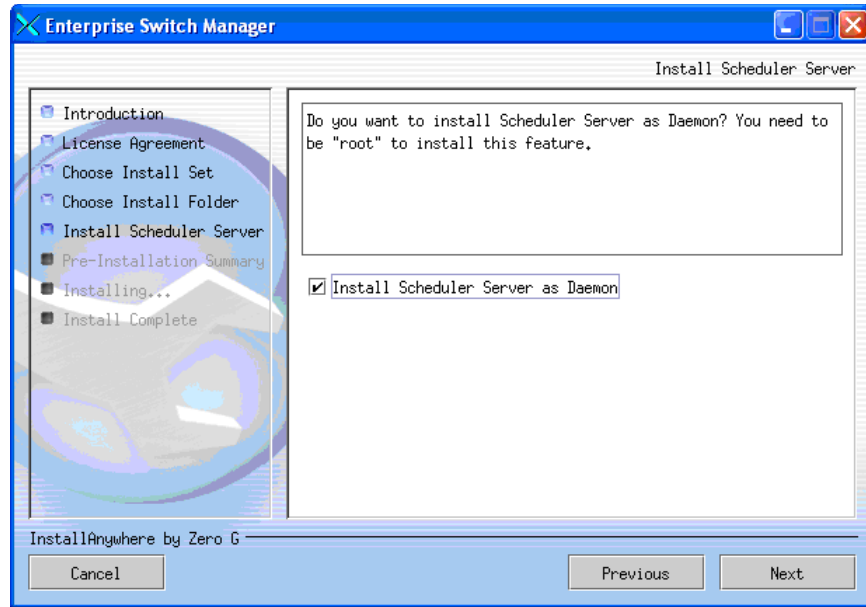
Figure 12 Choose Install Folder dialog box



- 7 Click **Restore Default Folder** or click **Choose** to select the storage path.
- 8 Click **Next**.

The **Install Scheduler Server** dialog box opens (Figure 13).

Figure 13 Install Scheduler Server dialog box



- 9 Select the **Install Scheduler Server as Daemon** check box if you want to install the Scheduler Server as a daemon (the default is not-selected).

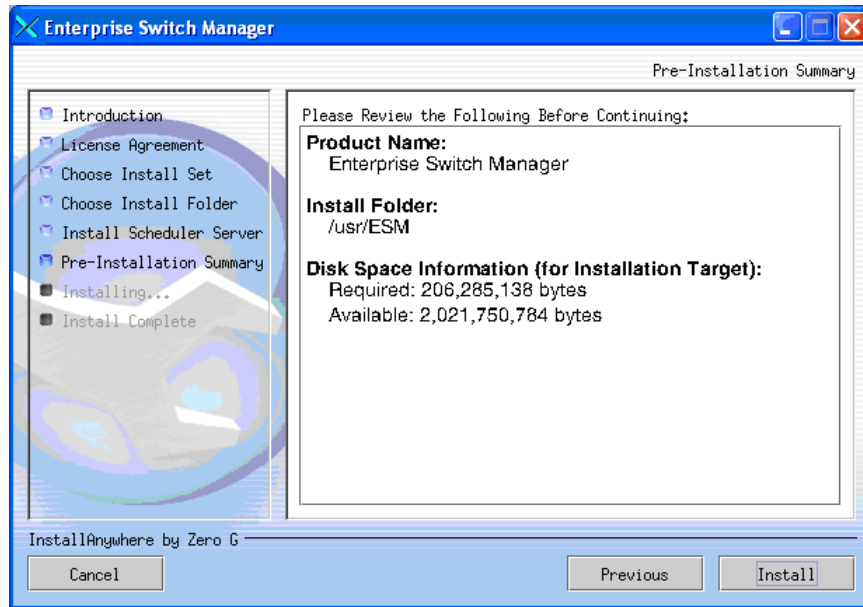
If you choose *not* to install the Scheduler Server as a daemon during the installation process, you can run Scheduler Server as a command.

If you do *not* have root privileges prior to installing the Scheduler Server, an Installer Error dialog box opens.

- 10 Click **Next**.

The **Pre-Installation Summary** dialog box opens (Figure 14).

Figure 14 Pre-installation Summary dialog box

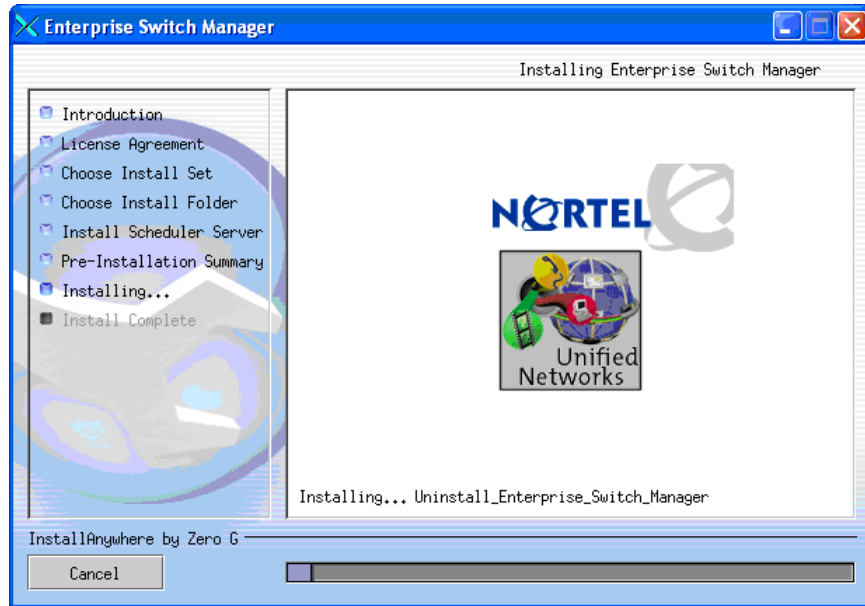


11 Verify the folder, shortcut(s), and disk space required to install the software. Use the **Previous** button to return to the appropriate dialog box to make changes.

12 Click **Install**.

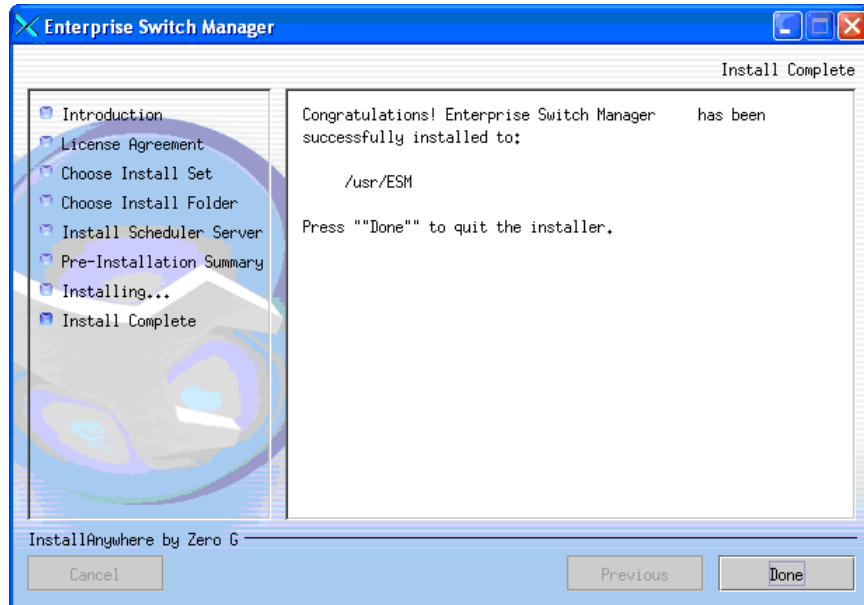
The installation process begins (Figure 15).

Figure 15 Installing Enterprise Switch Manager dialog box



When the installation is complete, the **Install Complete** dialog box opens (Figure 16).

Figure 16 Install Complete dialog box



13 Click **Done** to exit the installation.

Enterprise Switch Manager is now installed.

Installing ESM in a Linux environment

To run Enterprise Switch Manager on a Linux workstation, the workstation must be running Linux-Kernel version 2.2 and later. The appropriate operating system patches for the this version of Linux OS must be installed. If your system has an older version of Linux, you must upgrade the system to at least the Kernel version 2.2 and later before installing ESM.



Note: Because Linux is a multi-user system, Nortel recommends that you install ESM as a super-user (root). Super user is required to install the RMIRegistry server and the ESM Scheduler server.

This section contains information on the following topics:

- [“Installing ESM on Linux from the CD”](#)
- [“Installing ESM on Linux from the web”](#)
- [“Executing the ESM installation software on Linux”](#)

Installing ESM on Linux from the CD

The following instructions assume that you have mounted the CD-ROM drive onto the /cdrom directory. For instructions on mounting the CD-ROM drive, refer to your system’s operating system user guide.

To install the ESM software in a Linux environment from the CD:

- 1 Close all programs.
- 2 Insert the *Enterprise Switch Manager Software* CD into your CD-ROM drive.
- 1 Copy the install program file **esm_<xxxx>_linux.sh** from the **/ESM_SW/ESM-Unix** subdirectory to a preferred location on your workstation.
- 2 Run the install program by entering:

```
esm_<xxxx>_linux.sh
```

To continue, see [“Executing the ESM installation software on Solaris” on page 21.](#)

Installing ESM on Linux from the web

To install the ESM software on a Linux environment from the web:

- 1 Go to the following URL:

<http://www.nortel.com/support>

- 2 Select the software support page for ESM.

The software page opens.

- 3 Download the ESM software for Linux to a desired directory on your system. The software is a self-extracting .sh file.

- 4 Once the file transfer is complete, close all programs.

- 5 Navigate to the directory on your system where you loaded the ESM software.

- 6 Make the installation file executable by entering:

```
chmod a+x esm_<xxxx>_linux.sh
```

- 7 Run the install program by entering:

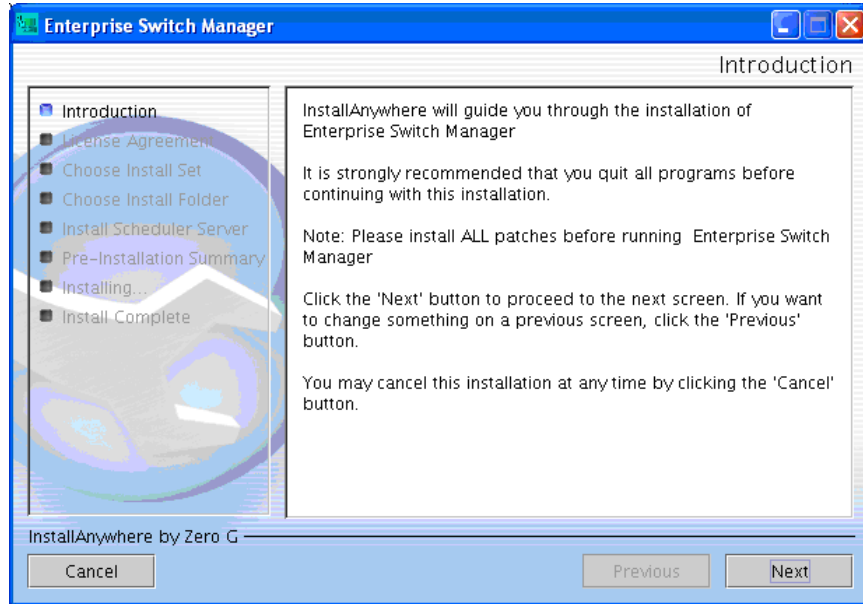
```
esm_<xxxx>_linux.sh
```

To continue, see “[Executing the ESM installation software on Solaris](#)” on [page 21](#).

Executing the ESM installation software on Linux

When you run the `esm_<xxxx>_linux.sh` program file, an install screen opens, followed by a Nortel dialog box. When the InstallAnywhere **Introduction** dialog box opens (Figure 17), you are ready to begin the ESM installation.

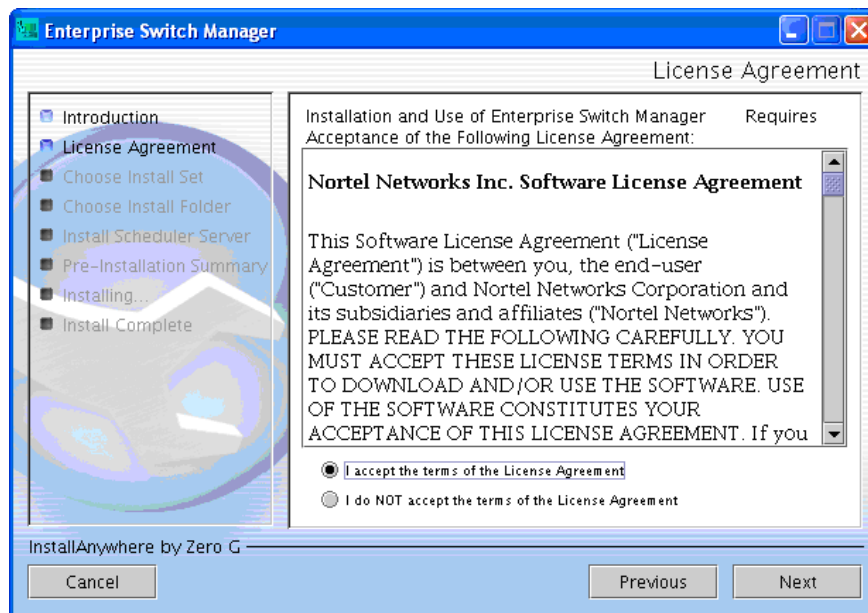
Figure 17 InstallAnywhere Introduction dialog box



- 1 Click **Next**.

2 The **License Agreement** dialog box opens (Figure 18).

Figure 18 License Agreement dialog box



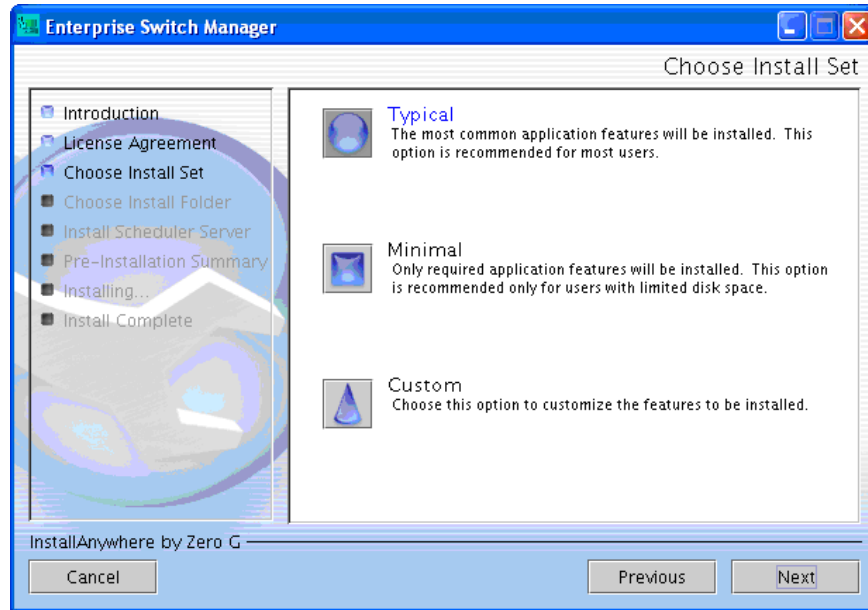
3 Read the terms of the license agreement carefully.

4 Click **I accept the terms of the license agreement** as shown in Figure 18.

5 Click **Next**.

The **Choose Install Set** dialog box opens (Figure 19).

Figure 19 Choose Install Set dialog box

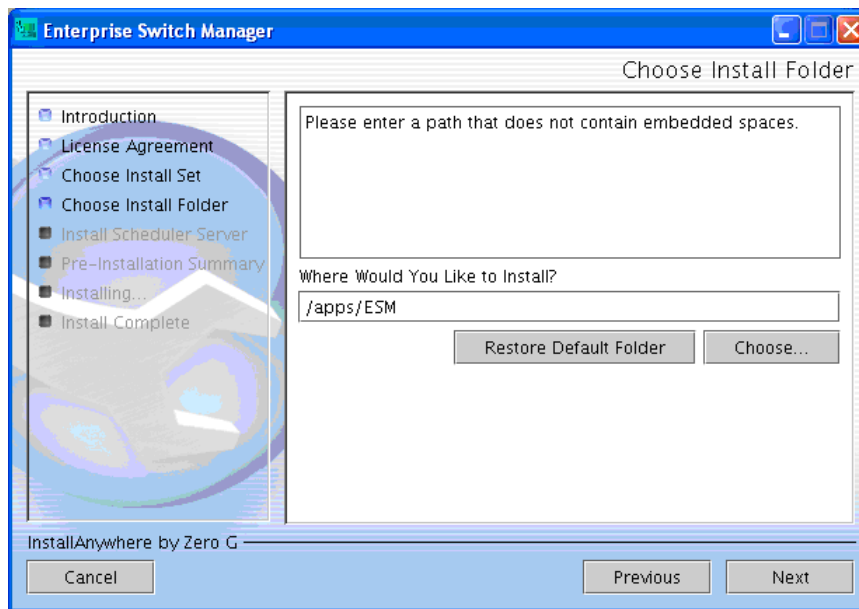


- Select **Typical** installation to install the common set features.
- Select **Minimal** installation to select features to install (recommended for those with limited disk space).
- Select **Custom** installation to customize the features prior to installation.

6 Click **Next**.

The **Choose Install Folder** dialog box opens (Figure 20).

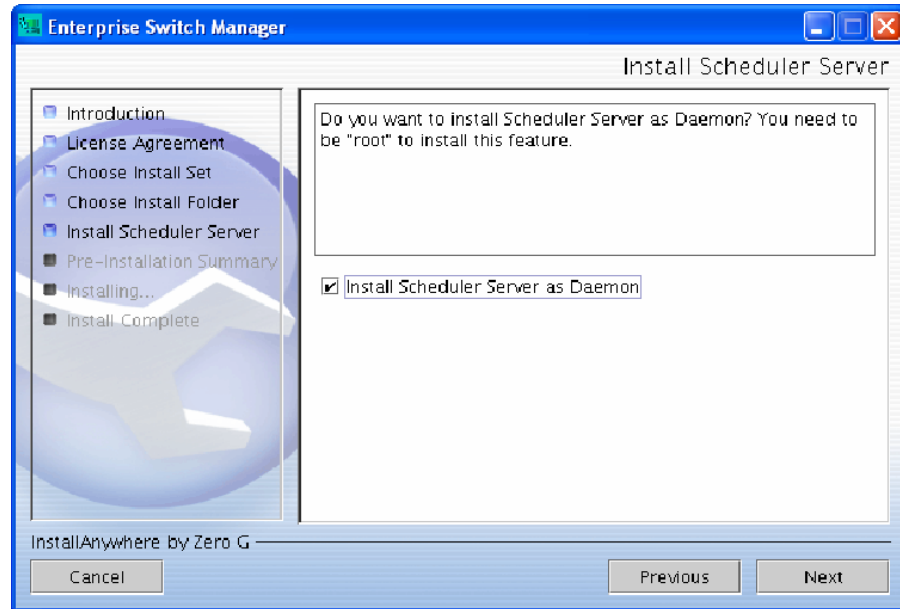
Figure 20 Choose Install Folder dialog box



- 7** Select **Restore Default Folder** or click **Choose** to select the storage path.
The path name must not contain any spaces.
- 8** Click **Next**.

The **Install Scheduler Server** dialog box opens (Figure 21).

Figure 21 Install Scheduler Server dialog box



- 9 Select the **Install Scheduler Server as Daemon** check box if you want to install the Scheduler Server as a daemon (the default is not-selected).

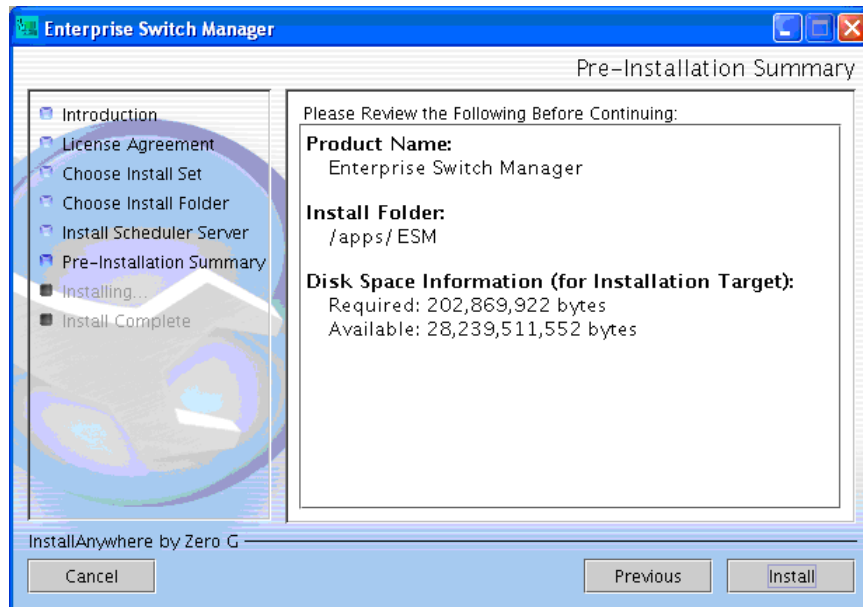
If you choose not to install the Scheduler Server as a daemon during the installation process, you can run Scheduler Server as a command.

If you do not have root privileges prior to installing the Scheduler Server, an Installer Error dialog box opens.

- 10 Click **Next**.

The **Pre-Installation Summary** dialog box opens (Figure 22).

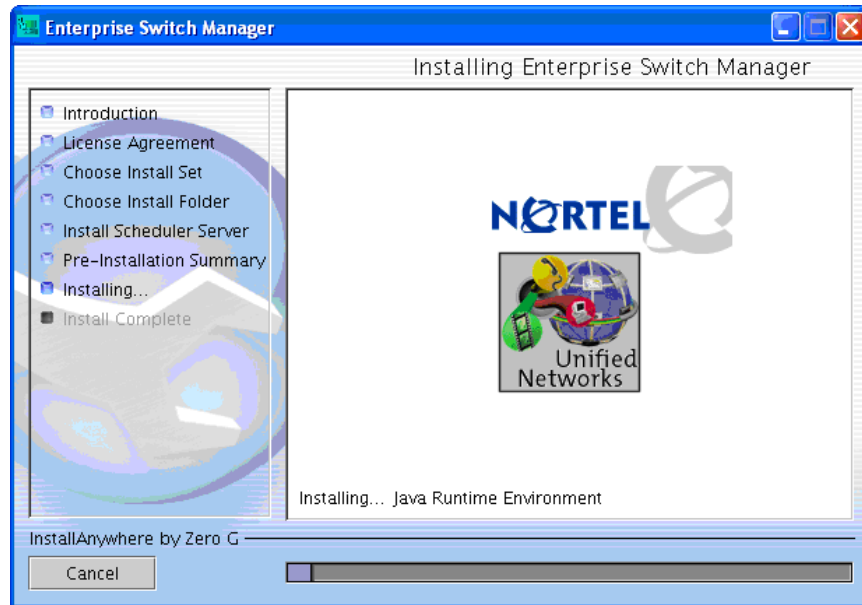
Figure 22 Pre-installation Summary dialog box



11 Click **Install**.

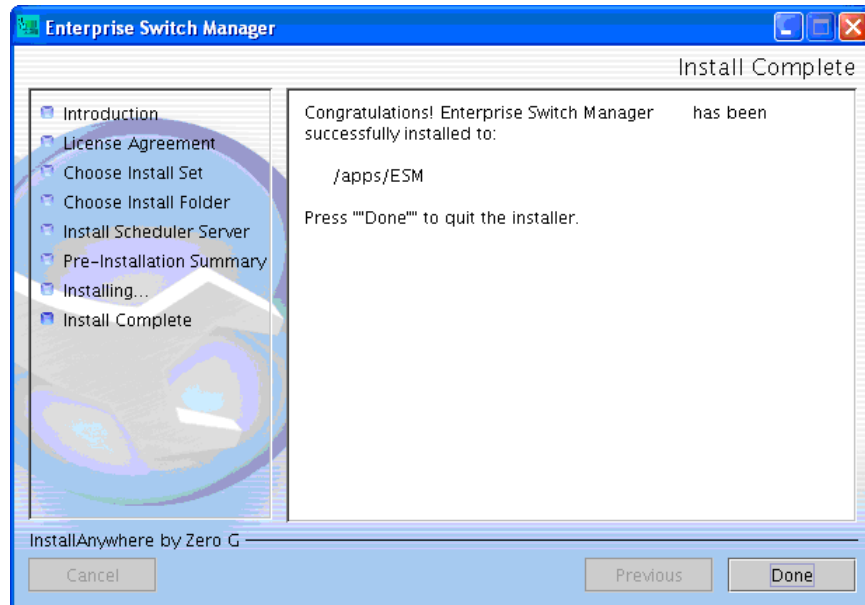
The installation process begins (Figure 23).

Figure 23 Installing Enterprise Switch Manager dialog box



12 When the installation is complete, the **Install Complete** dialog box opens (Figure 24).

Figure 24 Install Complete dialog box



13 Click **Done**.

Launching Enterprise Switch Manager

To start Enterprise Switch Manager in a SunOS/Solaris and Linux environment, enter the following command:

```
cd <ESM_INSTALLED_DIRECTORY> (for example, /usr/ESM/xxxx)  
  
./ESM
```

Launching Device Manager

To access the Device Manager, from the Enterprise Switch Manager, double-click a device or select the Device Manager icon from the toolbar. Device Manager is automatically installed when you install Enterprise Switch Manager.

To start the Device Manager separately from Enterprise Switch Manager, enter the command:

```
./JDM
```

To run Enterprise Switch Manager, refer to *Using Enterprise Switch Manager* (208963).

Launching Scheduler Server from the command line

If the **Install Scheduler Server as Daemon** check box is not selected during the ESM installation process (see [page 25](#)), you can start the Scheduler Server from the command line by executing these commands:

```
cd <ESM_INSTALLED_DIRECTORY> (for example, /usr/ESM/xxxx)
```

```
cd bin
```

```
./esm_scheduler
```



Note: The Scheduler Server remains active only during your login session; if you log out, the session terminates.

Removing ESM in Windows

In a Windows environment, remove existing versions of ESM software by using the Uninstall Enterprise Switch Manager option that was created in the Windows Start menu during installation.

For example, to remove ESM from a Windows XP system using the default program group, choose the following option from the Windows Start menu: **Programs > Nortel > Enterprise Switch Manager > Uninstall Enterprise Switch Manager**.

If no program group was added to the Windows Start menu during installation, then complete the following steps to remove existing Enterprise Switch Manager software:

- 1 Navigate to the folder where the ESM software is installed (for example, C:/Nortel/ESM).
- 2 Open the UninstallerData sub-folder.
- 3 Run the following file: *Uninstall Enterprise Switch Manager.exe*.

Removing ESM in Solaris or Linux environments

In a Solaris or Linux environment, complete the following steps to remove the existing Enterprise Switch Manager software:

- 1 Navigate to the directory where the ESM software is installed (for example /ESM).
- 2 Open the UninstallerData sub-directory.
- 3 Run the following file: *Uninstall_Enterprise_Switch_Manager_<x.x>*.

