



**NORTEL**

Nortel Ethernet Routing Switch 5000 Series

# Documentation Roadmap

Release: 6.0

Document Revision: 01.01

[www.nortel.com](http://www.nortel.com)

---

NN47200-103

Nortel Ethernet Routing Switch 5000 Series  
Release: 6.0  
Publication: NN47200-103  
Document status: Standard  
Document release date: 12 November 2008

Copyright © 2008 Nortel Networks  
All Rights Reserved.

Printed in Canada and the United States of America  
LEGAL NOTICE

While the information in this document is believed to be accurate and reliable, except as otherwise expressly agreed to in writing NORTEL PROVIDES THIS DOCUMENT "AS IS" WITHOUT WARRANTY OR CONDITION OF ANY KIND, EITHER EXPRESS OR IMPLIED. The information and/or products described in this document are subject to change without notice.

Nortel, the Nortel logo, and the Globemark are trademarks of Nortel Networks.

All other trademarks are the property of their respective owners.

---

# Contents

---

<b>Software license</b>	<b>5</b>
<b>New in this release</b>	<b>9</b>
Features	9
Other changes	9
New documents	9
<b>Introduction</b>	<b>11</b>
<b>Roadmap</b>	<b>13</b>
Customer documentation packaging	13
Product Fundamentals	14
Installation and Commissioning	15
Upgrades and Patches	16
Operations	16
Administration and Security	17
Fault and Performance Management	18
Documentation file formats	18
<b>Information quality</b>	<b>19</b>
<b>Text conventions</b>	<b>21</b>
Angle brackets	21
Bold or Bold Courier text	21
Braces	22
Brackets	22
Ellipses	22
Italic text	22
Plain Courier text	22
Separator	22
Vertical bar	23
or convention	23
<b>Modular, task-based information</b>	<b>25</b>
Task-based documentation	25
How to use task-based documentation	26
Task flow overview	26

Work flows, task flows, and procedures	27
Purpose statements	27
Prerequisites	27
Work flows or task flows	27
Procedure steps	28
Example procedures	28
Variable definitions	28
Job aid	28
Task-based documentation terms	28

---

**Customer service****29**

Updated versions of documentation	29
How to get help	29
Express Routing Codes	29
Additional information	30

---

## Software license

---

This section contains the Nortel Networks software license.

### **Nortel Networks Inc. software license agreement**

This Software License Agreement ("License Agreement") is between you, the end-user ("Customer") and Nortel Networks Corporation and its subsidiaries and affiliates ("Nortel Networks"). PLEASE READ THE FOLLOWING CAREFULLY. YOU MUST ACCEPT THESE LICENSE TERMS IN ORDER TO DOWNLOAD AND/OR USE THE SOFTWARE. USE OF THE SOFTWARE CONSTITUTES YOUR ACCEPTANCE OF THIS LICENSE AGREEMENT. If you do not accept these terms and conditions, return the Software, unused and in the original shipping container, within 30 days of purchase to obtain a credit for the full purchase price.

"Software" is owned or licensed by Nortel Networks, its parent or one of its subsidiaries or affiliates, and is copyrighted and licensed, not sold. Software consists of machine-readable instructions, its components, data, audio-visual content (such as images, text, recordings or pictures) and related licensed materials including all whole or partial copies. Nortel Networks grants you a license to use the Software only in the country where you acquired the Software. You obtain no rights other than those granted to you under this License Agreement. You are responsible for the selection of the Software and for the installation of, use of, and results obtained from the Software.

**1. Licensed Use of Software.** Nortel Networks grants Customer a nonexclusive license to use a copy of the Software on only one machine at any one time or to the extent of the activation or authorized usage level, whichever is applicable. To the extent Software is furnished for use with designated hardware or Customer furnished equipment ("CFE"), Customer is granted a nonexclusive license to use Software only on such hardware or CFE, as applicable. Software contains trade secrets and Customer agrees to treat Software as confidential information using the same care and discretion Customer uses with its own similar information that it does not wish to disclose, publish or disseminate. Customer will ensure that anyone who uses the Software does so only in compliance with the terms

of this Agreement. Customer shall not a) use, copy, modify, transfer or distribute the Software except as expressly authorized; b) reverse assemble, reverse compile, reverse engineer or otherwise translate the Software; c) create derivative works or modifications unless expressly authorized; or d) sublicense, rent or lease the Software. Licensors of intellectual property to Nortel Networks are beneficiaries of this provision. Upon termination or breach of the license by Customer or in the event designated hardware or CFE is no longer in use, Customer will promptly return the Software to Nortel Networks or certify its destruction. Nortel Networks may audit by remote polling or other reasonable means to determine Customer's Software activation or usage levels. If suppliers of third party software included in Software require Nortel Networks to include additional or different terms, Customer agrees to abide by such terms provided by Nortel Networks with respect to such third party software.

**2. Warranty.** Except as may be otherwise expressly agreed to in writing between Nortel Networks and Customer, Software is provided "AS IS" without any warranties (conditions) of any kind. NORTEL NETWORKS DISCLAIMS ALL WARRANTIES (CONDITIONS) FOR THE SOFTWARE, EITHER EXPRESS OR IMPLIED, INCLUDING, BUT NOT LIMITED TO THE IMPLIED WARRANTIES OF MERCHANTABILITY AND FITNESS FOR A PARTICULAR PURPOSE AND ANY WARRANTY OF NON-INFRINGEMENT. Nortel Networks is not obligated to provide support of any kind for the Software. Some jurisdictions do not allow exclusion of implied warranties, and, in such event, the above exclusions may not apply.

**3. Limitation of Remedies.** IN NO EVENT SHALL NORTEL NETWORKS OR ITS AGENTS OR SUPPLIERS BE LIABLE FOR ANY OF THE FOLLOWING: a) DAMAGES BASED ON ANY THIRD PARTY CLAIM; b) LOSS OF, OR DAMAGE TO, CUSTOMER'S RECORDS, FILES OR DATA; OR c) DIRECT, INDIRECT, SPECIAL, INCIDENTAL, PUNITIVE, OR CONSEQUENTIAL DAMAGES (INCLUDING LOST PROFITS OR SAVINGS), WHETHER IN CONTRACT, TORT OR OTHERWISE (INCLUDING NEGLIGENCE) ARISING OUT OF YOUR USE OF THE SOFTWARE, EVEN IF NORTEL NETWORKS, ITS AGENTS OR SUPPLIERS HAVE BEEN ADVISED OF THEIR POSSIBILITY. The forgoing limitations of remedies also apply to any developer and/or supplier of the Software. Such developer and/or supplier is an intended beneficiary of this Section. Some jurisdictions do not allow these limitations or exclusions and, in such event, they may not apply.

#### **4. General**

1. If Customer is the United States Government, the following paragraph shall apply: All Nortel Networks Software available under this License Agreement is commercial computer software and commercial computer

software documentation and, in the event Software is licensed for or on behalf of the United States Government, the respective rights to the software and software documentation are governed by Nortel Networks standard commercial license in accordance with U.S. Federal Regulations at 48 C.F.R. Sections 12.212 (for non-DoD entities) and 48 C.F.R. 227.7202 (for DoD entities).

2. Customer may terminate the license at any time. Nortel Networks may terminate the license if Customer fails to comply with the terms and conditions of this license. In either event, upon termination, Customer must either return the Software to Nortel Networks or certify its destruction.
3. Customer is responsible for payment of any taxes, including personal property taxes, resulting from Customer's use of the Software. Customer agrees to comply with all applicable laws including all applicable export and import laws and regulations.
4. Neither party may bring an action, regardless of form, more than two years after the cause of the action arose.
5. The terms and conditions of this License Agreement form the complete and exclusive agreement between Customer and Nortel Networks.
6. This License Agreement is governed by the laws of the country in which Customer acquires the Software. If the Software is acquired in the United States, then this License Agreement is governed by the laws of the state of New York.





---

## New in this release

---

The following section details what's new in *Nortel Ethernet Routing Switch 5000 Series Documentation Roadmap*, NN47200-103 for Release 6.0:

- [“Features”](#) (page 9)
- [“Other changes”](#) (page 9)

### Features

This document describes no new features.

### Other changes

See the following sections for information about changes that are not feature-related:

- [“New documents”](#) (page 9)

### New documents

Release 6.0 includes the following new documents:

- *Nortel Ethernet Routing Switch 5000 Series — Quick Install Guide*, 325107-A
- *Nortel Ethernet Routing Switch 5600 Series — Regulatory Information*, NN47200-101
- *Nortel Ethernet Routing Switch 5000 Series Fundamentals*, NN47200-102
- *Nortel Ethernet Routing Switch 5000 Series Documentation Roadmap*, NN47200-103
- *Nortel Ethernet Routing Switch 5000 Series Terminology*, NN47200-106

For more information about new documents, see [“Roadmap”](#) (page 13).



# Introduction

---

This document explains the organization of the technical documentation for the Nortel Ethernet Routing Switch 5000 Series Release 6.0. Use this document to understand where you can find specific types of information in the customer documentation suite.

## Navigation

- [“Roadmap” \(page 13\)](#)
- [“Information quality” \(page 19\)](#)
- [“Text conventions” \(page 21\)](#)
- [“Modular, task-based information” \(page 25\)](#)
- [“Customer service” \(page 29\)](#)



---

# Roadmap

---

This section is a roadmap for the Nortel Ethernet Routing Switch 5000 Series documentation. Use this section to find the correct document for the task you need to perform.

Nortel Ethernet Routing Switch 5000 Series technical documents are structured with an emphasis on the tasks you perform.

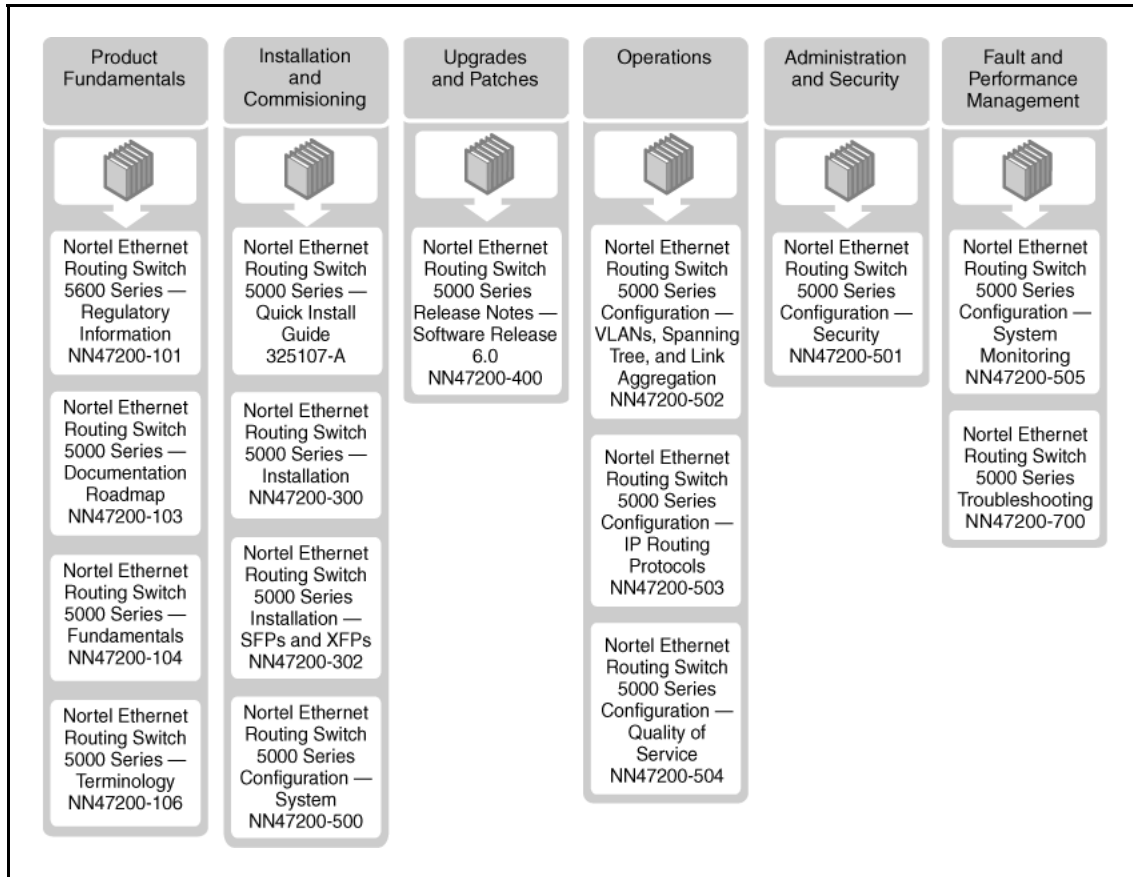
## Navigation

- [“Customer documentation packaging” \(page 13\)](#)
- [“Product Fundamentals” \(page 14\)](#)
- [“Installation and Commissioning” \(page 15\)](#)
- [“Upgrades and Patches” \(page 16\)](#)
- [“Administration and Security” \(page 17\)](#)
- [“Operations” \(page 16\)](#)
- [“Fault and Performance Management” \(page 18\)](#)
- [“Documentation file formats” \(page 18\)](#)

## Customer documentation packaging

Nortel technical documents are organized according to job functions. For information about how the Nortel Ethernet Routing Switch 5000 Series NTP suite is organized, see the following figure.

**Figure 1**  
**Nortel Ethernet Routing Switch 5000 Series documentation packaging**



## Product Fundamentals

Product Fundamentals documentation includes product overview and information that applies to all areas of the product.

**Table 1**  
**Nortel Ethernet Routing Switch 5000 Series product fundamentals documents**

Document title	Description
<i>Nortel Ethernet Routing Switch 5600 Series — Regulatory Information, NN47200-101</i>	This document provides regulatory and precautionary messages applicable to the Nortel Ethernet Routing Switch 5600 Series.
<i>Nortel Ethernet Routing Switch 5000 Series Documentation Roadmap, NN47200-103</i>	This document contains an overview of the documentation suite and explains how to use task-based documentation.

**Table 1**  
**Nortel Ethernet Routing Switch 5000 Series product fundamentals documents (cont'd.)**

Document title	Description
<i>Nortel Ethernet Routing Switch 5000 Series — Fundamentals</i> , NN47200-104	This document provides instructions to use the Nortel Ethernet Routing Switch 5000 Series user interfaces, including Nortel Networks command line interface (NNCLI), Web-based management interface, and Device Manager, and includes procedures to use configuration files.
<i>Nortel Ethernet Routing Switch 5000 Series — Terminology</i> , NN47200-106	This document contains common terms and acronyms used in the Nortel Ethernet Routing Switch 5000 Series documentation suite.

## Installation and Commissioning

Installation and Commissioning documentation includes information that supports initial installation and commissioning (initial configuration) activities, including preparation, processes, safety requirements, and instructions for rollback procedures.

The following table describes Nortel Ethernet Routing Switch 5000 Series installation and commissioning documents.

**Table 2**  
**Nortel Ethernet Routing Switch 5000 Series installation and commissioning documents**

Document title	Description
<i>Nortel Ethernet Routing Switch 5000 Series — Quick Install Guide</i> , 325107-A	This document provides abbreviated instructions for experienced users to install the Nortel Ethernet Routing Switch 5000 Series in an equipment rack or on a shelf.
<i>Nortel Ethernet Routing Switch 5000 Series — Installation</i> , NN47200-300	This document provides instructions to install the Nortel Ethernet Routing Switch 5000 Series in an equipment rack (individually or in a stack) or on a shelf. It also provides instructions to perform the initial IP configuration on the switch using the console menu, NNCLI, UI button, or Web-based management. It also provides instructions to verify switch status using the front-panel LEDs.

**Table 2**  
**Nortel Ethernet Routing Switch 5000 Series installation and commissioning documents**  
 (cont'd.)

Document title	Description
<i>Nortel Ethernet Routing Switch 5000 Series Installation — SFPs and XFPs</i> , NN47200-302	This document provides instructions to install small form factor pluggable transceivers, 10 Gigabit small form factor pluggable transceivers, and includes specifications for these hardware components.
<i>Nortel Ethernet Routing Switch 5000 Series — System Configuration</i> , NN47200-500	This document provides instructions to perform basic configuration of the Nortel Ethernet Routing Switch 5000 Series including procedures to configure the switch IP address after hardware installation. It also provides instructions to configure system-level features such as stacking, feature licensing, Simple Network Time Protocol, BootP, Domain Name System, PoE, and LLDP.

## Upgrades and Patches

Upgrades and Patches documentation includes information to upgrade software and hardware components.

The following table describes Nortel Ethernet Routing Switch 5000 Series upgrades and patches documents.

**Table 3**  
**Nortel Ethernet Routing Switch 5000 Series upgrades and patches documents**

Document title	Description
<i>Nortel Ethernet Routing Switch 5000 Series Release Notes — Software Release 6.0</i> , NN47200-400	This document describes new features and important information about the latest release. Release Notes includes a list of known issues (including workarounds where appropriate) and a list of fixed issues.

## Operations

Operations documents include information that supports tasks related to configuration (post-commissioning) of services or applications, routine maintenance of hardware or software, and accounting or billing activities.



The following table describes Nortel Ethernet Routing Switch 5000 Series operations documents.

**Table 4**  
**Nortel Ethernet Routing Switch 5000 Series operations documents**

Document title	Description
<i>Nortel Ethernet Routing Switch 5000 Series Configuration — VLANs and Spanning Tree, and MultiLink Trunking, NN47200-502</i>	This document describes procedures and conceptual information to configure VLANs, Spanning Tree, Link Aggregation Control Protocol, and Multi-Link Trunking on the Nortel Ethernet Routing Switch 5000 Series.
<i>Nortel Ethernet Routing Switch 5000 Series Configuration — IP Routing Protocols, NN47200-503</i>	This document provides procedures and conceptual information to configure IP routing features on the Nortel Ethernet Routing Switch 5000 Series, including static routes, RIP, OSPF, Proxy ARP, DHCP Relay, and UDP forwarding. It also provides procedures and conceptual information to manage multicast traffic using IGMP snooping and PIM-SM.
<i>Nortel Ethernet Routing Switch 5000 Series Configuration — Quality of Service, NN47200-504</i>	This document provides procedures and conceptual information to configure Quality of Service on the Nortel Ethernet Routing Switch 5000 Series.

## Administration and Security

Administration and Security documentation includes information that supports tasks that operations personnel perform that relate to network administration or product security, including the configuration and management of systems data and users. The documentation also includes the management and protection of resources from unauthorized or detrimental access and use.

The following table describes Nortel Ethernet Routing Switch 5000 Series administration and security documents.

**Table 5**  
**Nortel Ethernet Routing Switch 5000 Series administration and security documents**

Document title	Description
<i>Nortel Ethernet Routing Switch 5000 Series Security</i> , NN47200-501	This document provides procedures and conceptual information to administer and configure security features for the Nortel Ethernet Routing Switch 5000 Series, including MAC-based security, RADIUS, EAPOL, IP Source Guard, DHCP Snooping, SSH, and NSNA.

## Fault and Performance Management

Fault and Performance Management documents include information that supports the tasks that operations personnel perform that relate to managing or preventing faults, troubleshooting, and monitoring and improving the performance of the network or product

The following table describes Nortel Ethernet Routing Switch 5000 Series fault and performance management documents.

**Table 6**  
**Nortel Ethernet Routing Switch 5000 Series fault and performance management documents**

Document title	Description
<i>Nortel Ethernet Routing Switch 5000 Series Configuration — System Monitoring</i> , NN47200-505	This document provides information about system diagnostics tools including syslog, Remote Monitoring, port mirroring, and displaying port and chassis statistics.
<i>Nortel Ethernet Routing Switch 5000 Series Troubleshooting</i> , NN47200-700	This document describes common problems and error messages and the techniques to resolve them.

## Documentation file formats

To locate the Nortel Ethernet Routing Switch 5000 Series software Release 6.0 documentation on the Nortel Web site, see “[Customer service](#)” (page 29), or the documentation CD. The following documents are also available in print format:

- *Nortel Ethernet Routing Switch 5000 Series — Quick Install Guide*, 325107-A
- *Nortel Ethernet Routing Switch 5000 Series — Regulatory Information*, NN47200-101

---

## Information quality

---

Nortel technical documents are tested by subject matter experts (SMEs) throughout the product development lifecycle. SMEs from Design, Product Verification (PV), Product Line Management (PLM), Verification Office (VO), and Global Network Product Support (GNPS), all contribute to document quality.

Nortel releases technical documents in the early stages of development that have not completed all testing milestones, on a limited basis. Documents that have not completed testing bear a Draft watermark on every page to indicate that the content they contain may change as the product is refined and document testing is completed. Draft documents are not widely available.



---

# Text conventions

---

This chapter describes the text conventions used in the Nortel Ethernet Routing Switch 5000 Series documentation.

## Navigation

- “Angle brackets” (page 21)
- “Bold or Bold Courier text” (page 21)
- “Braces” (page 22)
- “Brackets” (page 22)
- “Ellipses” (page 22)
- “Italic text” (page 22)
- “Plain Courier text” (page 22)
- “Separator” (page 22)
- “Vertical bar” (page 23)
- “cr convention” (page 23)

## Angle brackets

Indicates that you choose the text to enter based on the description inside the brackets. Do not type the brackets when entering the command.

Example: If the command syntax is `ping <ip_address>`, you enter `ping 192.32.10.12`

## Bold or Bold Courier text

**Bold** or **Bold Courier** text indicates command names, options, and text that you must enter.

Example: Use the `info` command.

Example: Enter `show ip {alerts | routes}`.

Example: **Protocols, IP** identifies the IP command on the Protocols menu.

## Braces

Braces ({ }) indicate required elements in syntax descriptions where more than one option is available. You must choose only one option. Do not type the braces when you enter the command.

Example: If the command syntax is `show ip {alerts|routes}`, you must enter either `show ip alerts` or `show ip routes`, but not both.

## Brackets

Brackets ([ ]) indicate optional elements in syntax descriptions. Do not type the brackets when you enter the command.

Example: If the command syntax is `show ip interfaces [-alerts]`, you can enter either `show ip interfaces` or `show ip interfaces -alerts`.

## Ellipses

An ellipsis (...) indicates that you repeat the last element of the command as needed.

Example: If the command syntax is `ethernet/2/1 [ <parameter> <value> ] ...`, you enter `ethernet/2/1` and as many parameter-value pairs as you need.

## Italic text

*Italic* text indicates book titles or new terms followed by a definition.

Example: *Nortel Ethernet Routing Switch 5000 Series Release Notes, NN47200-400.*

## Plain Courier text

Plain Courier text indicates system output, for example, prompts and system messages.

Example: Set Trap Monitor Filters

## Separator

A separator ( , ) shows menu paths.

Example: **Protocols , IP** identifies the IP command on the Protocols menu.

## Vertical bar

A vertical bar ( | ) separates choices for command keywords and arguments. Enter only one choice. Do not type the vertical line when you enter the command.

Example: If the command syntax is `show ip {alerts|routes}`, you enter either `show ip alerts` or `show ip routes`, but not both.

## cr convention

In NNCLI procedures, when you see <cr> as an option for a command, you can press the **Enter** key on your keyboard to execute the command.





---

## Modular, task-based information

---

Modular, task-based information (MTBI) is a quick reference for using the Nortel Ethernet Routing Switch 5000 Series task-based documentation. MTBI describes the structure of task-based information and how it can be used most effectively.

### Navigation

- [“Task-based documentation” \(page 25\)](#)
- [“How to use task-based documentation” \(page 26\)](#)
- [“Task flow overview” \(page 26\)](#)
- [“Work flows, task flows, and procedures” \(page 27\)](#)
- [“Task-based documentation terms” \(page 28\)](#)

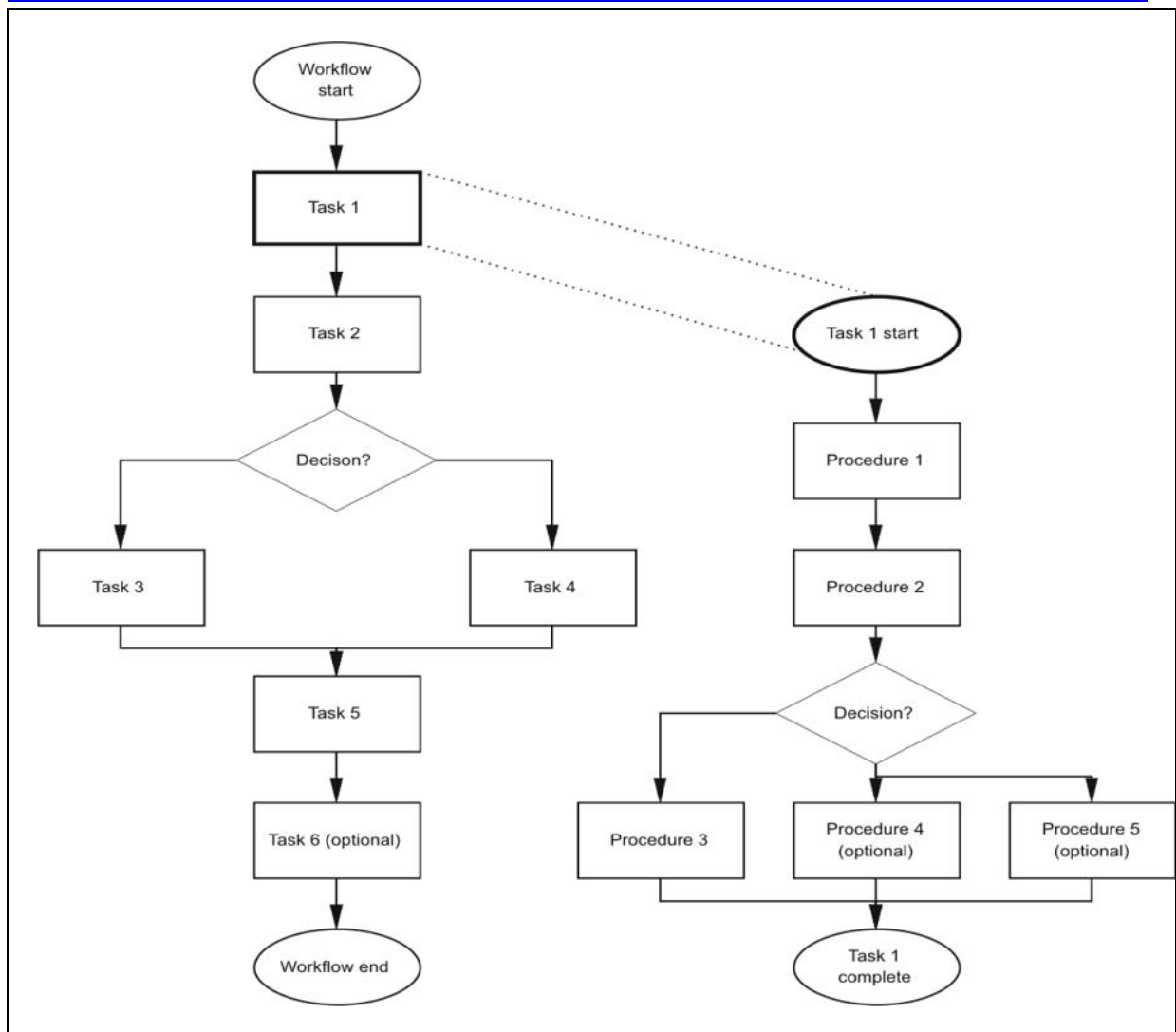
### Task-based documentation

Task-based documentation is a new way of packaging customer information in a structured, modular, task-centric format.

Task-based documentation focuses on what the user must do and the sequence in which to perform tasks.

The goal is to make Nortel documentation easy to find, easy to use, timely, and accurate.

The following figure describes the relationship between work flows, task flows, and procedures.



## How to use task-based documentation

In task-based documentation, procedural information is included in the document. Conceptual and reference information is provided, and the user is guided on how to use conceptual and reference material by identified prerequisites or direct links and references.

The user navigates the information by following the flows that are provided for tasks and procedures.

## Task flow overview

Task flows are flowcharts that illustrate which procedures and decisions are involved to complete an activity.

The task flows guide you through activities to use the Nortel Ethernet Routing Switch 5000 Series, whether it is configuration, upgrading, installation, maintenance, or troubleshooting.

Each flow provides the prerequisites and links to the tasks or procedures.

To perform or refer to a procedure, always follow the task flow. Following the task flows ensures that you meet all the requirements for successful completion of the task.

## **Work flows, task flows, and procedures**

Work flows, task flows, and procedures have similar elements to maintain consistency and usability. Each of the following sections have a specific function:

- [“Purpose statements” \(page 27\)](#)
- [“Prerequisites” \(page 27\)](#)
- [“Work flows or task flows” \(page 27\)](#)
- [“Procedure steps” \(page 28\)](#)
- [“Example procedures” \(page 28\)](#)
- [“Variable definitions” \(page 28\)](#)
- [“Job aid” \(page 28\)](#)

To understand the relationship between work flows, task flows, and procedures, see *Work flows, task flows, and procedures* in task-based documentation.

### **Purpose statements**

Purpose statements explain why or when you would perform a work flow, task, or procedure and impact.

### **Prerequisites**

Prerequisites list everything you must do or understand before you start the workflow, task, or procedure. Prerequisites can include tasks that should already be completed, risks, confirmation of system status, required knowledge, time estimates or limitations, and links to supporting information.

The prerequisite section is omitted if no required prerequisites exist.

### **Work flows or task flows**

This section is the flow chart diagram that represents the task flow with navigational links to the tasks or procedures in the flow.

**Procedure steps**

Procedures provide numerical steps that help you perform the procedure. Each step is a single action.

**Example procedures**

Some procedures use examples to show how to correctly perform the procedure with realistic settings.

**Variable definitions**

Variable definitions provide the possible values, ranges, or definitions of variables used in the procedure steps.

If variables are not used in the procedure, then the variables definition section is omitted.

**Job aid**

Job aids provide information help to successfully perform the procedure.

The job aid is only used when required.

**Task-based documentation terms**

The following table describes task-based documentation terms.

<b>Term</b>	<b>Description</b>
Work flow	A high or top-level group of tasks.
Task or task flow	A logical group of procedures represented as a single action in a flowchart diagram. Complex tasks can be divided into simpler tasks or subtasks.
Procedure	A logical group of single action steps in a task.
Step	A single action performed in a procedure.
Variable	A placeholder in procedure steps representing a value or definition.

Restructuring Nortel technical documents into a task-based format is an ongoing initiative. The documentation for some Nortel products is already converted to the new format.

---

## Customer service

---

Visit the Nortel Web site to access the complete range of services and support that Nortel provides. Go to [www.nortel.com](http://www.nortel.com) or go to one of the pages listed in the following sections.

### Navigation

- “Updated versions of documentation” (page 29)
- “How to get help” (page 29)
- “Express Routing Codes” (page 29)
- “Additional information” (page 30)

### Updated versions of documentation

You can download and print the latest versions of Nortel Ethernet Routing Switch 5000 Series technical documentation and Release Notes directly from the Internet at <http://nortel.com/documentation>.

### How to get help

If you purchased a service contract for your Nortel product from a distributor or authorized reseller, contact the technical support staff for that distributor or reseller for assistance.

If you purchased a Nortel service program, you can get help by contacting one of the Nortel Technical Solutions Centers found at <http://www.nortel.com/callus>; or visit our Technical Support site at <http://www.nortel.com/support>.

### Express Routing Codes

An Express Routing Code (ERC) is available for many Nortel products and services.

When you use an ERC, your call is routed to a technical support person who specializes in supporting that particular product or service. To locate an ERC for any product or service, go to <http://www.nortel.com/erc>.

**Additional information**

Use the information in the following table to access other areas of the Nortel Web site.

<b>For information about</b>	<b>Contact</b>
Contact Us	<a href="http://www.nortel.com/contactus">http://www.nortel.com/contactus</a>
Documentation feedback	<a href="http://www.nortel.com/documentfeedback">http://www.nortel.com/documentfeedback</a>
Products (marketing)	<a href="http://www.nortel.com/product">http://www.nortel.com/product</a>
Partner Information Center (PIC)	<a href="http://www.nortel.com/pic">http://www.nortel.com/pic</a>
Register	<a href="http://www.nortel.com/register">http://www.nortel.com/register</a>
Search	<a href="http://nortel.com/search">http://nortel.com/search</a>
Services	<a href="http://nortel.com/services">http://nortel.com/services</a>
Training	<a href="http://nortel.com/trainings">http://nortel.com/trainings</a>



## Nortel Ethernet Routing Switch 5000 Series

# Documentation Roadmap

Copyright © 2008 Nortel Networks  
All Rights Reserved.

Printed in Canada and the United States of America  
Release: 6.0  
Publication: NN47200-103  
Document status: Standard  
Document revision: 01.01  
Document release date: 12 November 2008

To provide feedback or to report a problem in this document, go to [www.nortel.com/documentfeedback](http://www.nortel.com/documentfeedback).

[www.nortel.com](http://www.nortel.com)  
LEGAL NOTICE

While the information in this document is believed to be accurate and reliable, except as otherwise expressly agreed to in writing NORTEL PROVIDES THIS DOCUMENT "AS IS" WITHOUT WARRANTY OR CONDITION OF ANY KIND, EITHER EXPRESS OR IMPLIED. The information and/or products described in this document are subject to change without notice.

Nortel, the Nortel logo, and the Globemark are trademarks of Nortel Networks.

All other trademarks are the property of their respective owners.

